

TM
MagicPoint Ver 2.x

Win2k/WinXP Driver's User Guide(Support Resistive)

Hwayoung Systems Co.,Ltd

152-050 514, Woolim e-BIZ Center, 170-5,
Guro-Dong, Guro-Gu, Seoul, KOREA

TEL : 02-2108-2855

FAX : 02-2108-2860

URL : www.hwayoungs.com

INDEX

1. Info	3
A. Introduction of MagicPoint 2.x	
2. Installation and execution	4
A. Installation - Connection type	
B. Touch Connection	
C. Installation file	
D. Installation start	
E. Destination folder selection	
F. Installation Complete	
G. Connecting Hardware	
H. Manual Installation	
I. Un-installation	
J. Start up	
K. Touch screen information	
3. Setting	16
A. Mouse event mode	
B. Right button setting	
C. Fine offset setting	
D. Double click setting	
E. Calibration	
4. Rotation & Cursor	24
A. Rotation setting	
B. Cursor show/ hide setting	
5. Sound & Drawing	26
A. Sound setting	
B. Drawing test	
Appendix A)FAQ of touchscreen	28

1. Info

A. Introduction of MagicPoint 2.x

- ❖ Hwayoung Systems provides software that allows your touchmonitor to work with your computer. Drivers are located on the enclosed CD-ROM.

2. Installation and execution

❖ System requirements

- IBM PC compatible
- Main memory: Min 32 Mb
- Windows 2000/Windows XP/ Windows Vista (32bit)
- Hard disk min. 6Mb



REF

Reaction speed of touch screen will vary according to the specifications of computer.

A. Installation – Connection type

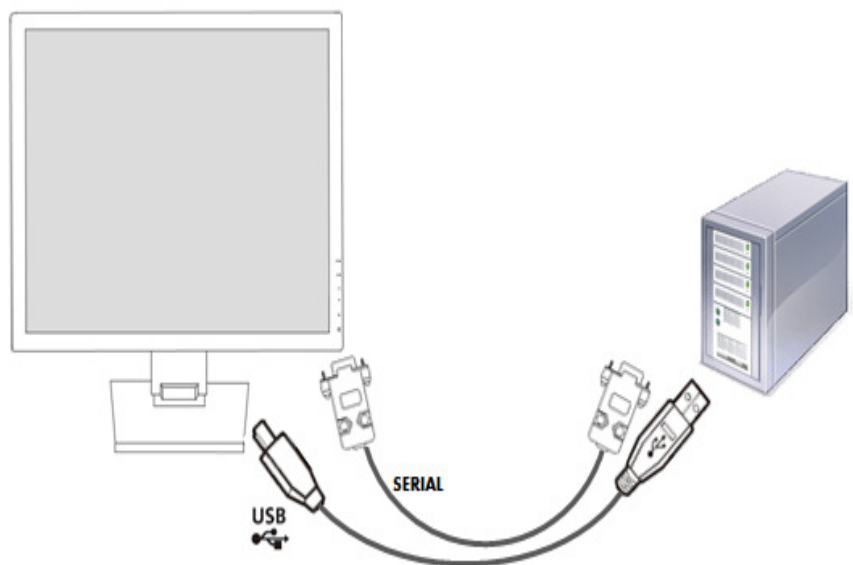
If your touch device is USB type, please follow the installation process type below.

Install the driver software, before you connect USB cable to PC, refer to

“(3) Installation Start” guide of following page.

Serial type installation does not depend on installation order.

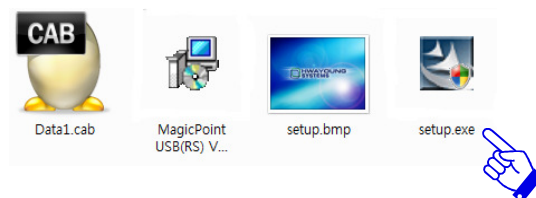
B. Touch Connection



After Driver Installation, connect the USB cable to your computer.

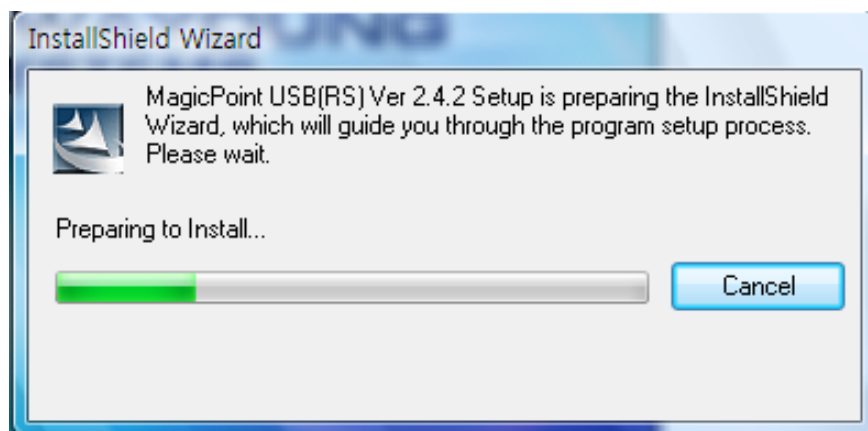
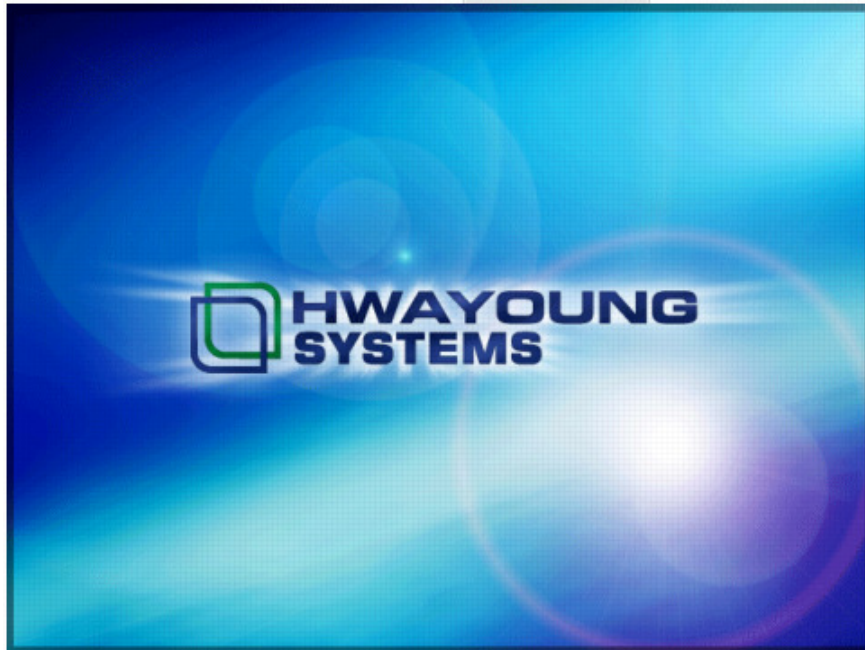
C. Installation file

- ❖ Select and execute “setup.exe” on the Installation CD.

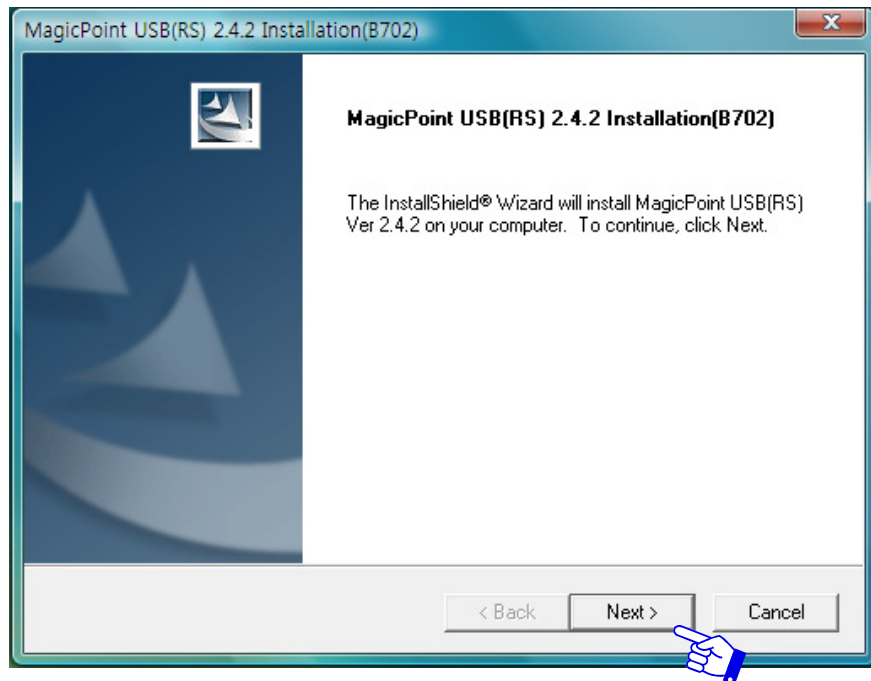


D. Installation start

- ❖ At the initial page, you can see the below pictures.

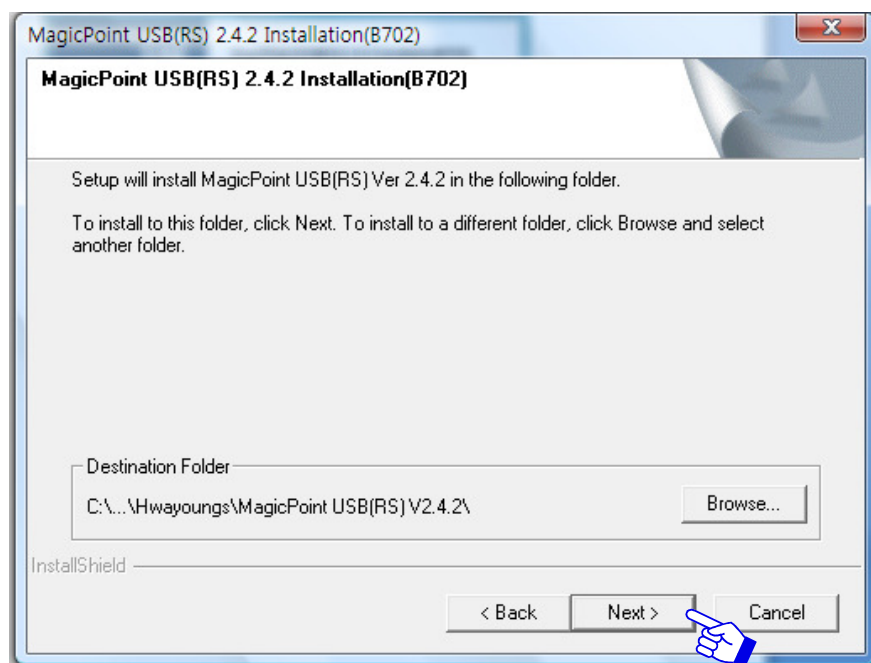


- ❖ Click the [Next] button in the dialog box below.

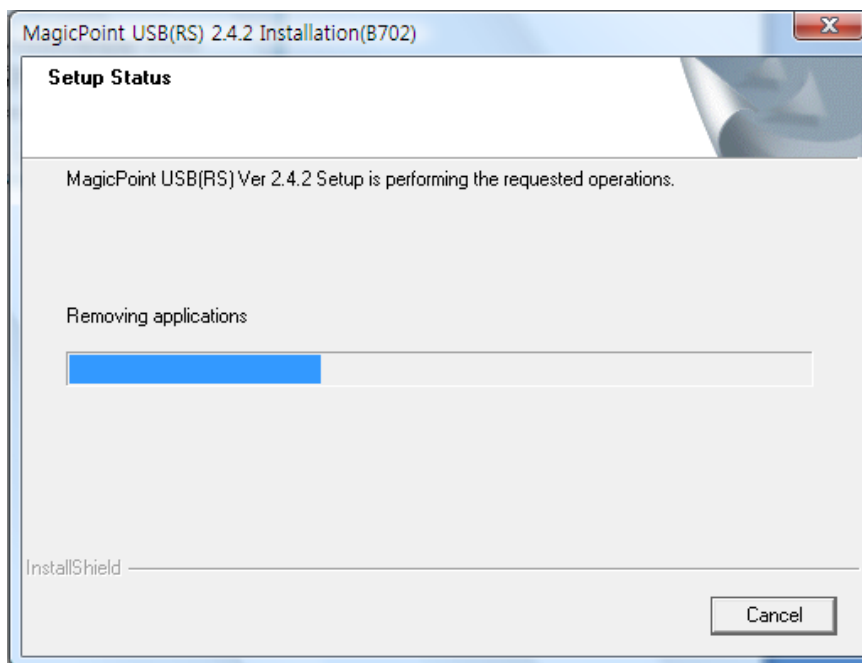
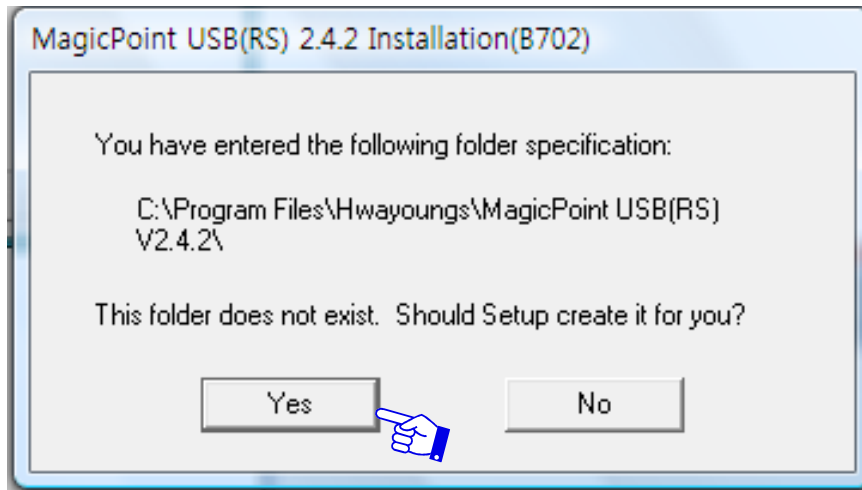


E. Destination folder selection

- ❖ Use the [Browse] button to select your preferred "Destination Folder". Click [Next] button in dialog box below.



- If the message box appears with the message “The folder does not exist. Should Setup create it for you?”, click the “yes” button.

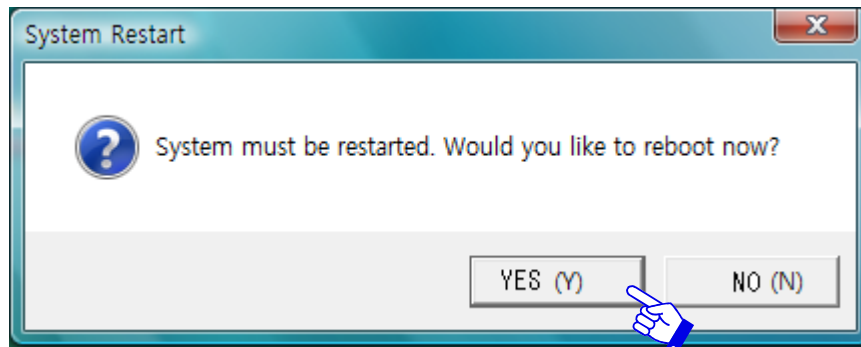


REF

The installation process includes a driver file. You don't need to install a driver separately. If a “compatibility warning message” appears, please click the “continue” button.

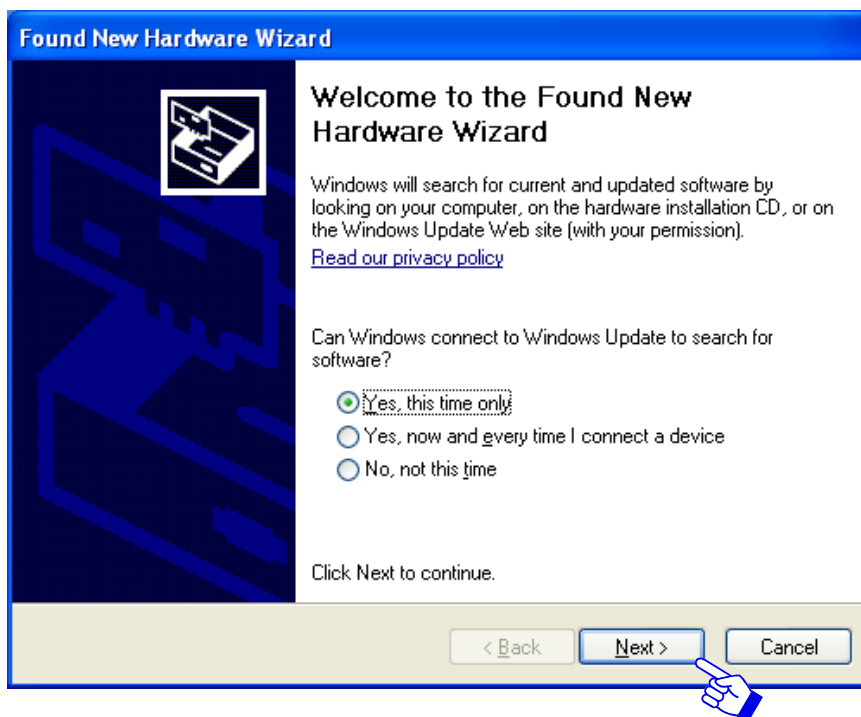
F. Installation Complete

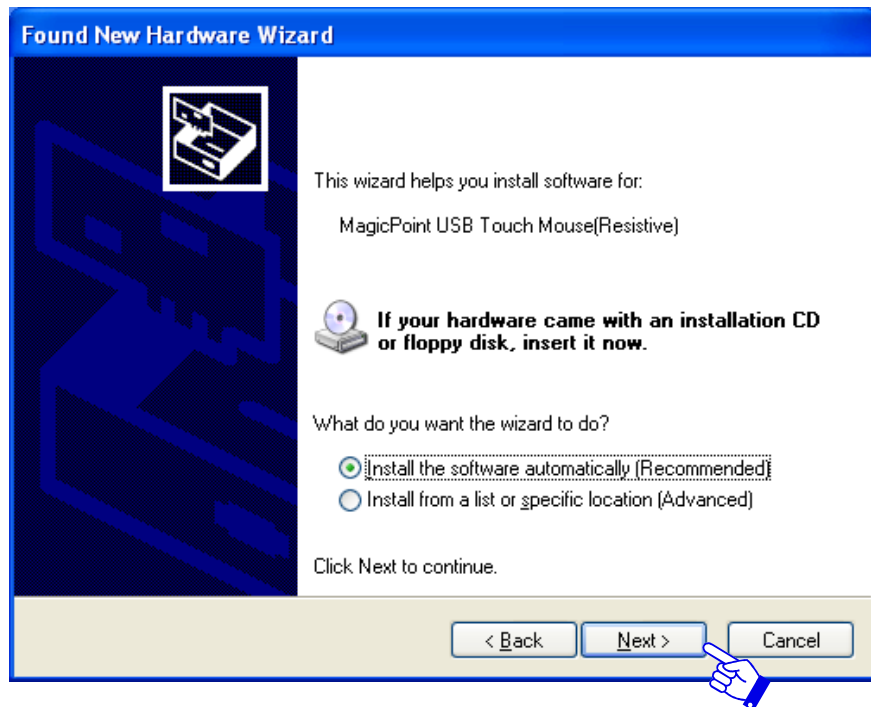
- The message box, "System Restart" will appear, then please click [Yes] or [No] button to restart system.



G. Connecting Hardware

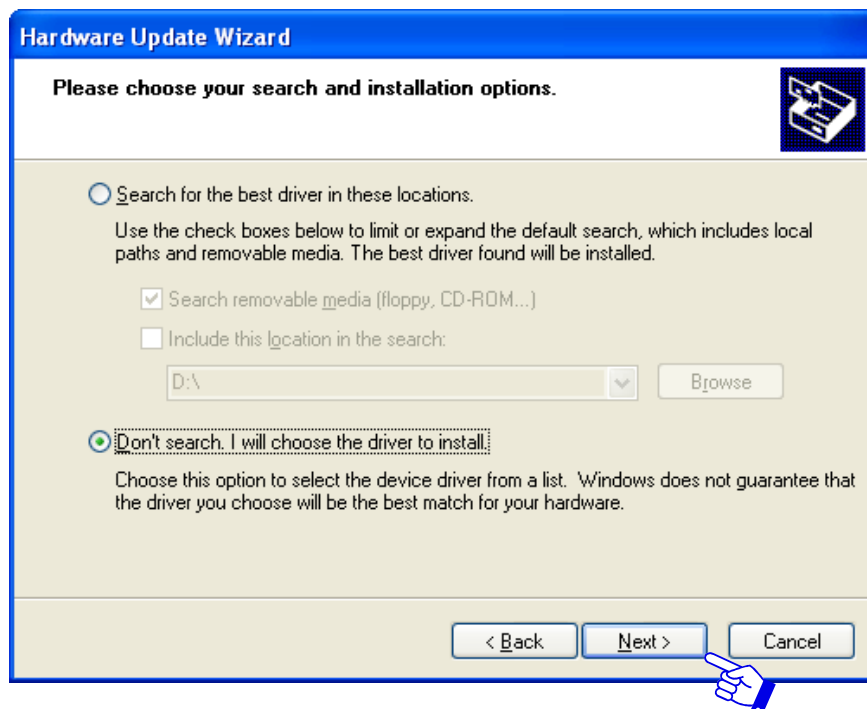
- After system reboot is complete, connect the USB cable to the touchmonitor and to the computer USB port. A "Found New Hardware Wizard" message box will appear. Click the [Next] button twice as in the diagram below. The installation will then be complete.

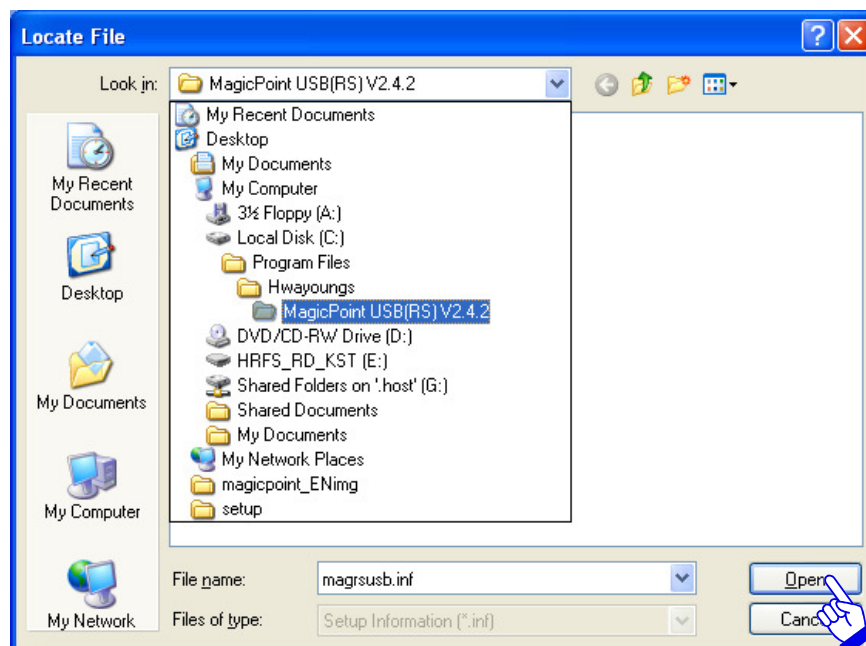
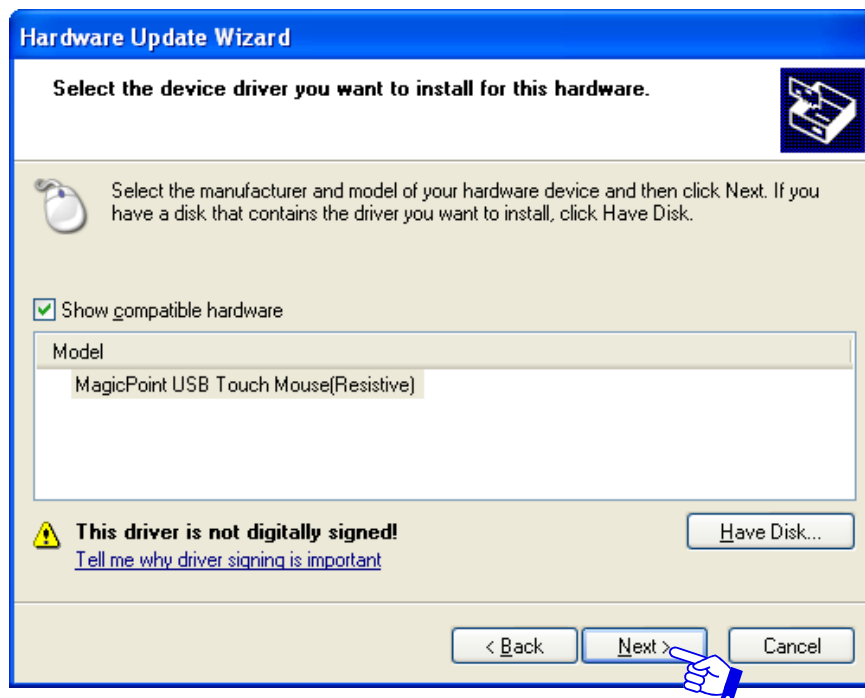


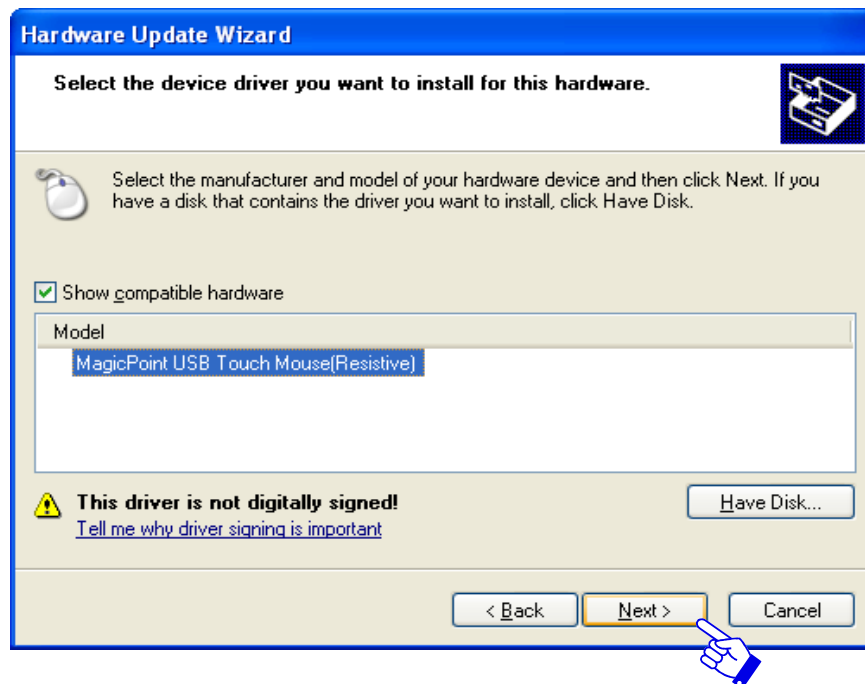


H. Manual Installation

- ☞ If the operating system requires restoration or reinstallation, manual installation of the driver file may be required. The below diagram explains how to do this. If you already have a MagicPoint 2.x driver file on your computer, please click on [Cancel] to close a dialog box, refer to “Program Installation”.
- ☞ If you don't have a MagicPoint 2.x driver file, continue the installation as below.







- ☐ After completing the above steps, you can see the “Completing the Found New Hardware Wizard.” Please click the [finish] button.



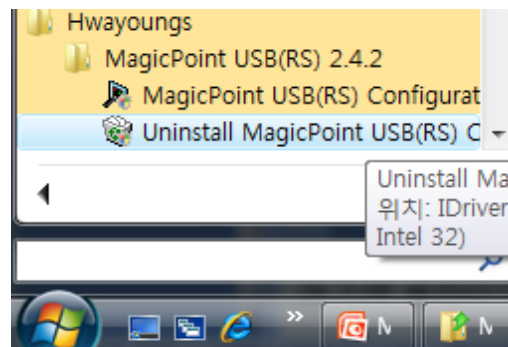
If the MagicPoint 2.x program file is damaged reinstall it with the Setup CD.

I. Un-installation

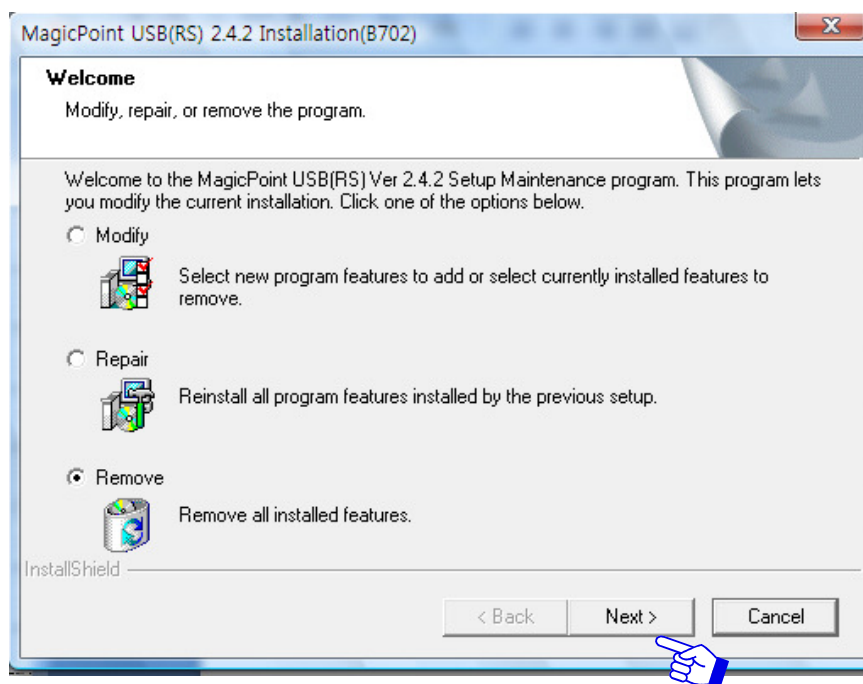
❖ You need to uninstall the MagicPoint 2.x under these conditions

- Already have the MagicPoint 2.x on your computer
- Caused Installation error
- Want to remove touchmonitor function from your computer

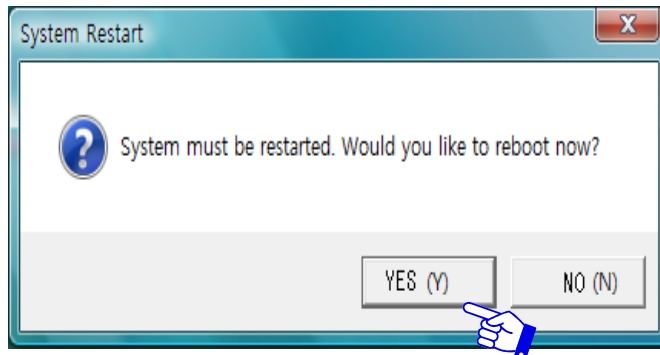
☞ Firstly, select [Uninstall MagicPoint USB (RS) Configuration] on Start Menu



☞ Select “Remove” and click the [Next] button in the dialog box below.

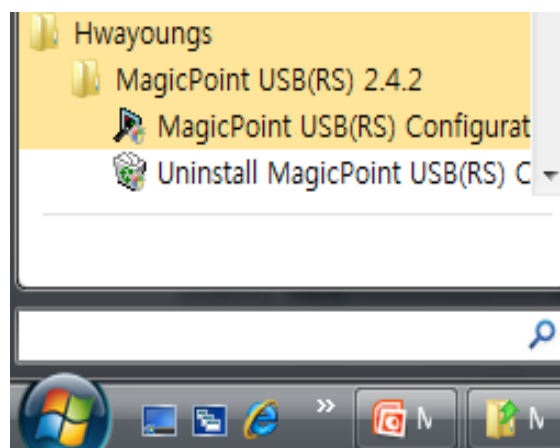
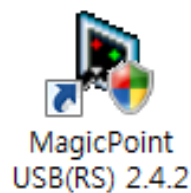


- ☞ If using a USB connection, un-plug the touch screen USB cable from your computer.
- ☞ Click the [Yes] button and then the [touch screen software] will be uninstalled.



J. Start up

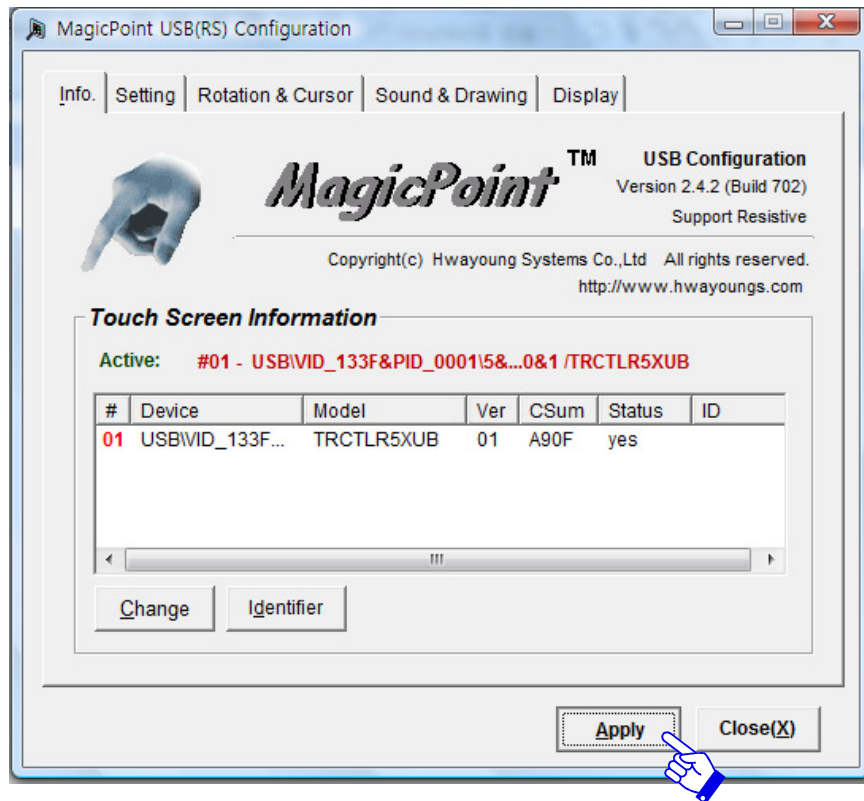
- ☞ After installation, the MagicPoint 2.x icon will appear on the desktop. Click this icon or select Start >> Programs >> Hwayoungs>> MagicPoint 2.x, click the MagicPoint USB (RS) Configuration icon to start.



- ☞ The above diagram shows the Wallpaper Icon and Start Menu after the installation of the MagicPoint 2.4.2

K. Touch screen information

- ❖ Details of version, device ID, model, firmware version and checksum and status are available in the MagicPoint USB configuration dialog box as shown below.



- ❖ Select the driver in the check box and then click on [Apply].



REF

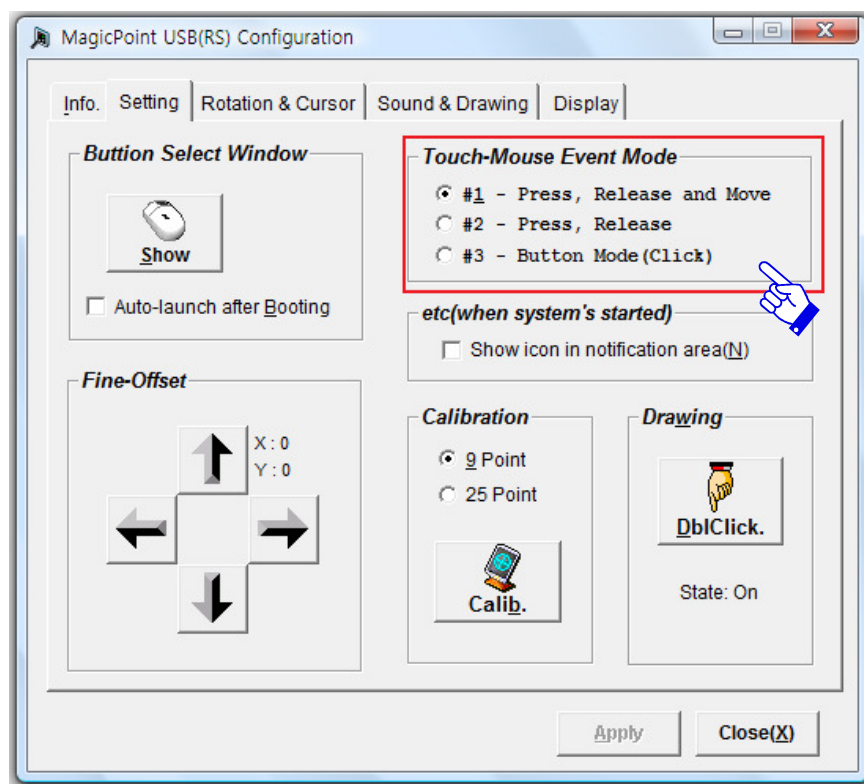
If you fail to search a driver S/S, please refer to appendix D) Q4.

3. Setting

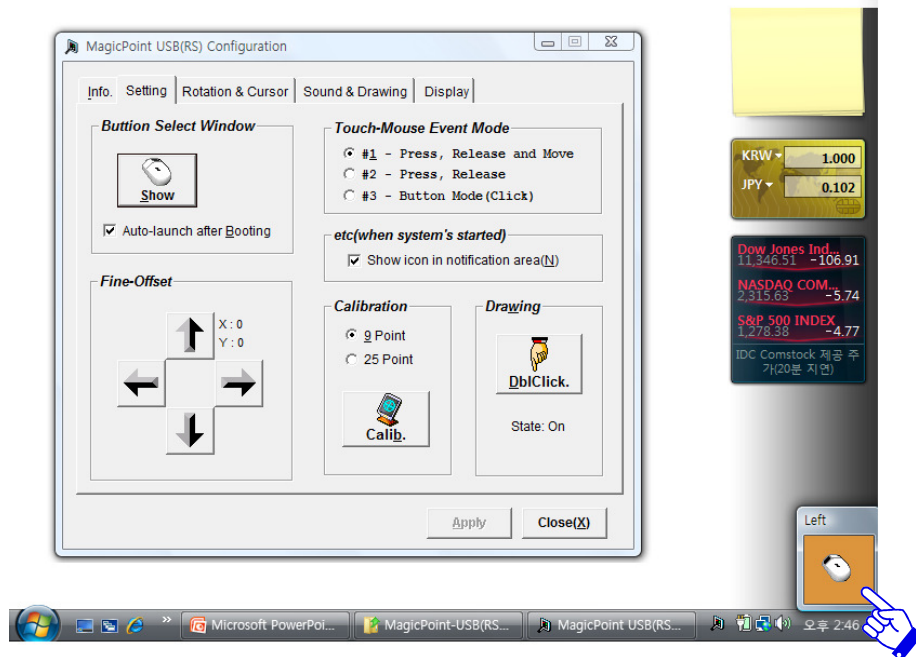
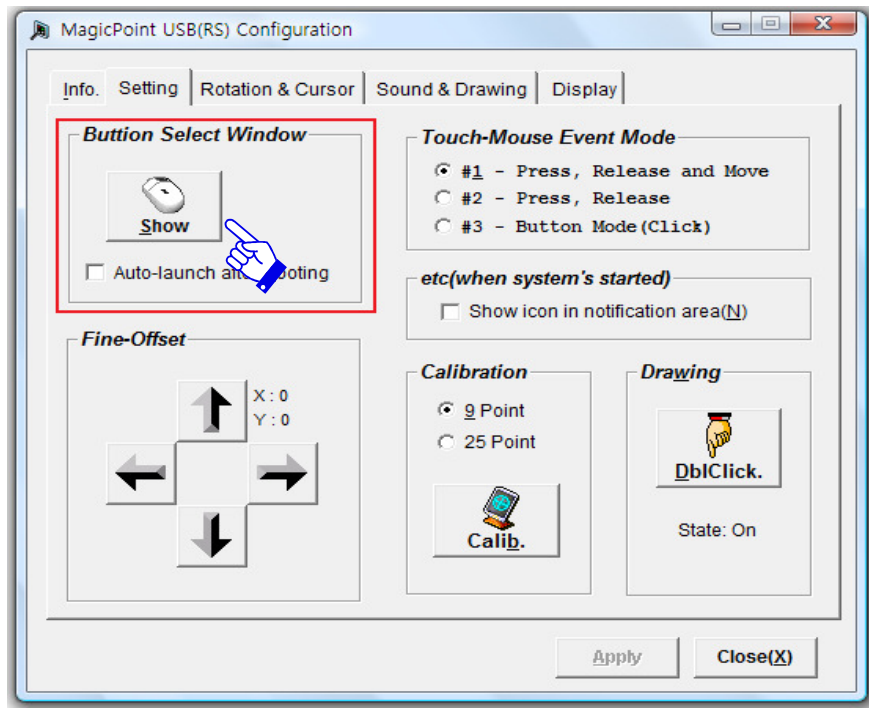
A. Mouse event mode

- ❖ In order for user friendly mouse function and event mode, you can setup "Mouse event mode".
- Use the 'Setting' tab to define the mouse events on the Touch Screen. The recommended default setting is Press, Release and Move.
- Explanation for the terms of Touch-Mouse Event Mode
 - A. Press: Mouse input event begins to be recognized by contacting your finger or stylus pen onto the touch screen.
 - B. Release: Mouse input event begins to be recognized by releasing your finger or stylus pen from the touch screen.
 - C. Button: you can adjust the cursor location
- ☑ In the every single modes, from #1 to 3 in "Touch-Mouse Event Mode", it is indicated that the excluded event mode doesn't operate

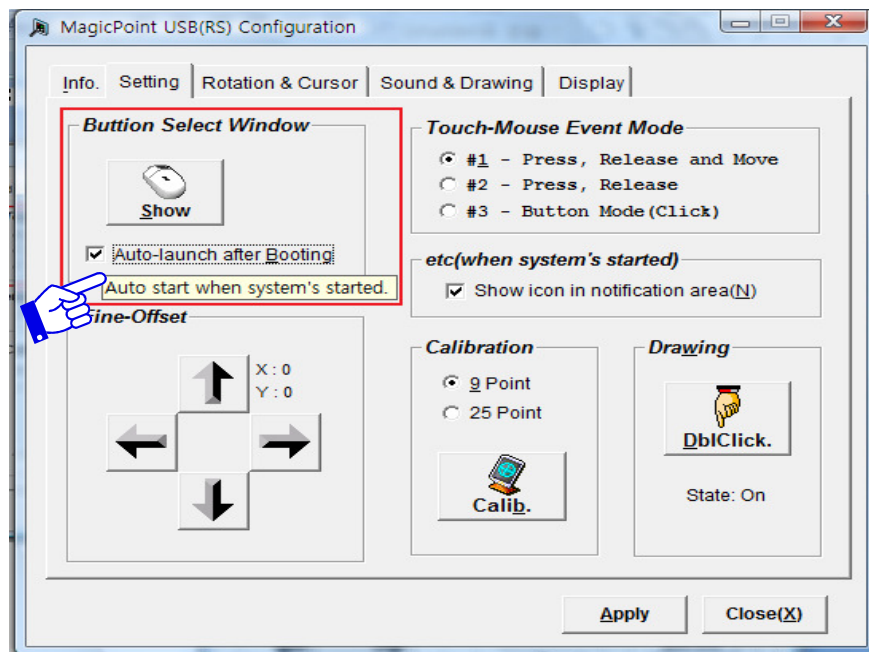
B. Right button setting



- ❖ It is possible to set a mouse event for the right mouse button. Click [Show] in the Setting Tab. Click on the “Button Selecting Window”. The “Button Selecting Window” will appear like the below pictures together with the check box at the right down side of your screen, click on “Right button setting” on it.

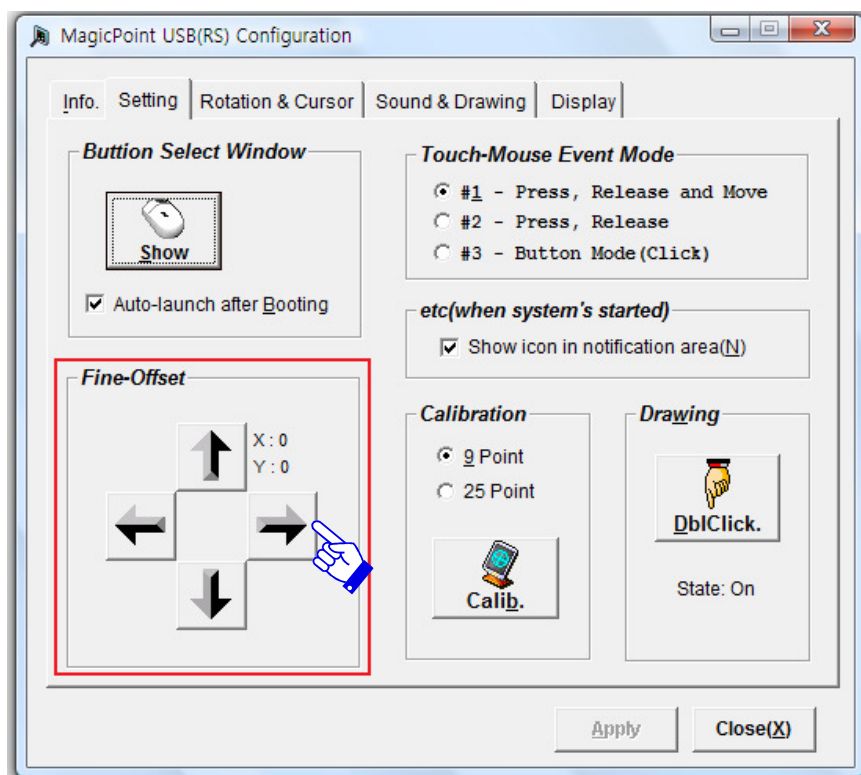
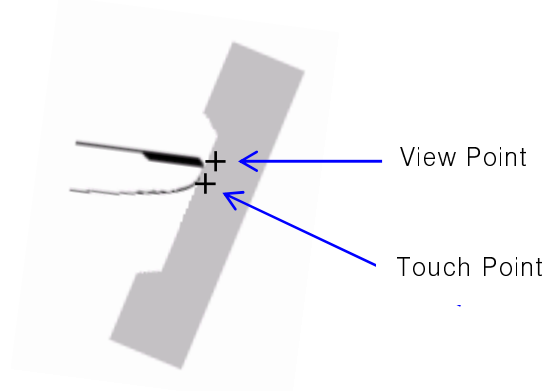


- ❖ If you want to see the [Button Selecting Window] on the touchmonitor continuously, check the [Auto-launch after Booting] check box and then click [Apply].



C. Fine offset setting

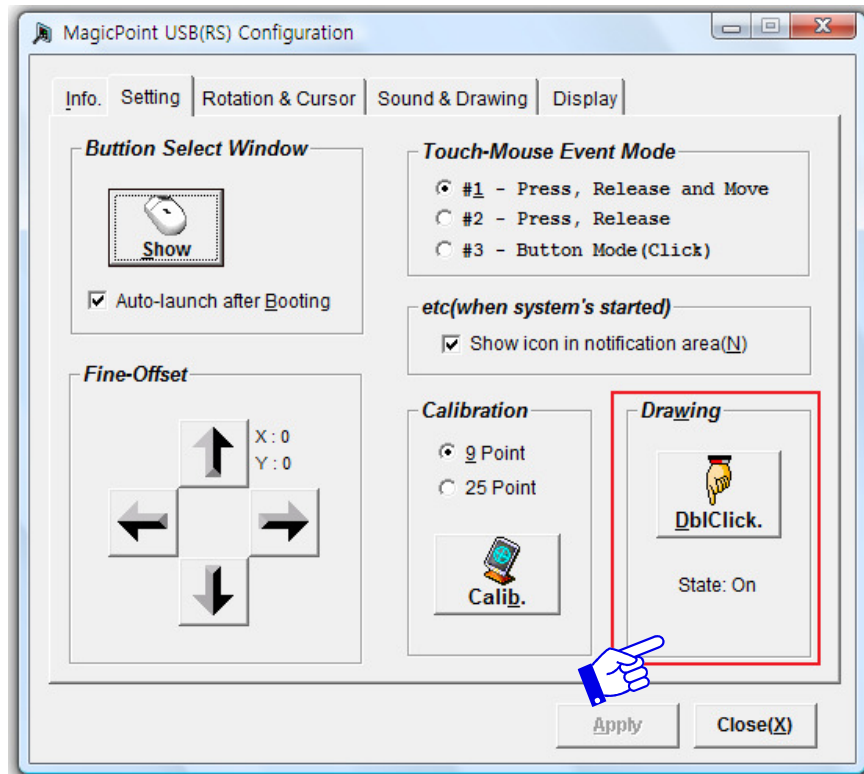
- ❖ Generally, there will be a positional difference between view point and touch point as shown below. You can compensate for the perceptual difference by adjusting the position of the pointer using the Fine Offset buttons as shown below



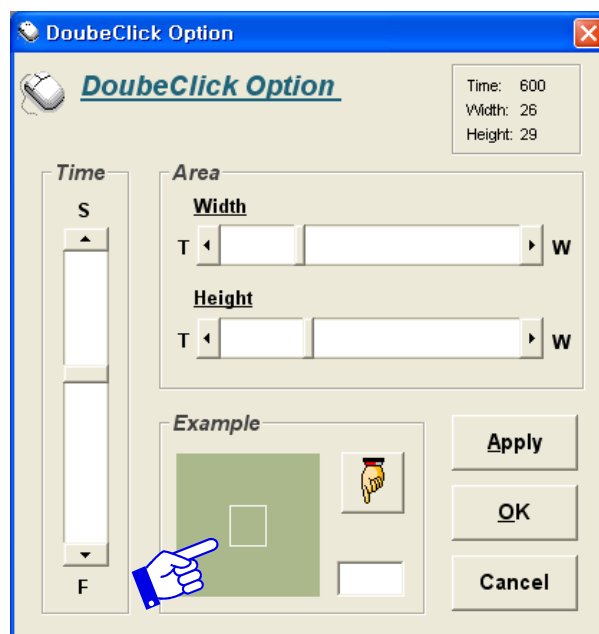
- ❖ The position of output can be changed by adjusting the X or Y coordinates. Click the arrow icons to adjust and click [Apply]

D. Double click setting

- ❖ Click [DbClick] to set the double click Time and Area attributes. (“State: On” means double click is active, “State: Off” means double click is inactive.)



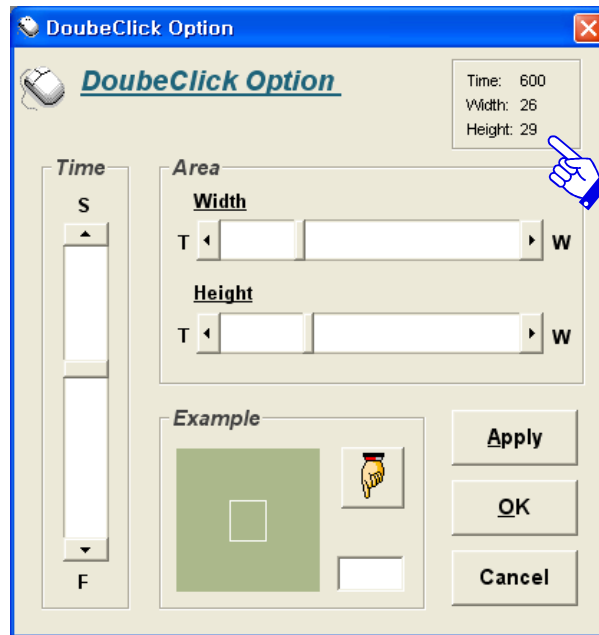
- ❖ After adjusting Time and Area by using the sliders as shown in the dialog box below, click the [Apply] button to complete. It's possible to check the real size of the Area using the Example box (see below.)



(1) Definition of Time and Area

- ❖ Time is the interval between first and second touch. (Unit: ms)
- ❖ Area is the area within which two touches will be recognized as a double click. (Unit: dot)

☞ Too high values of Time and Area can cause fault in the Double Click function.

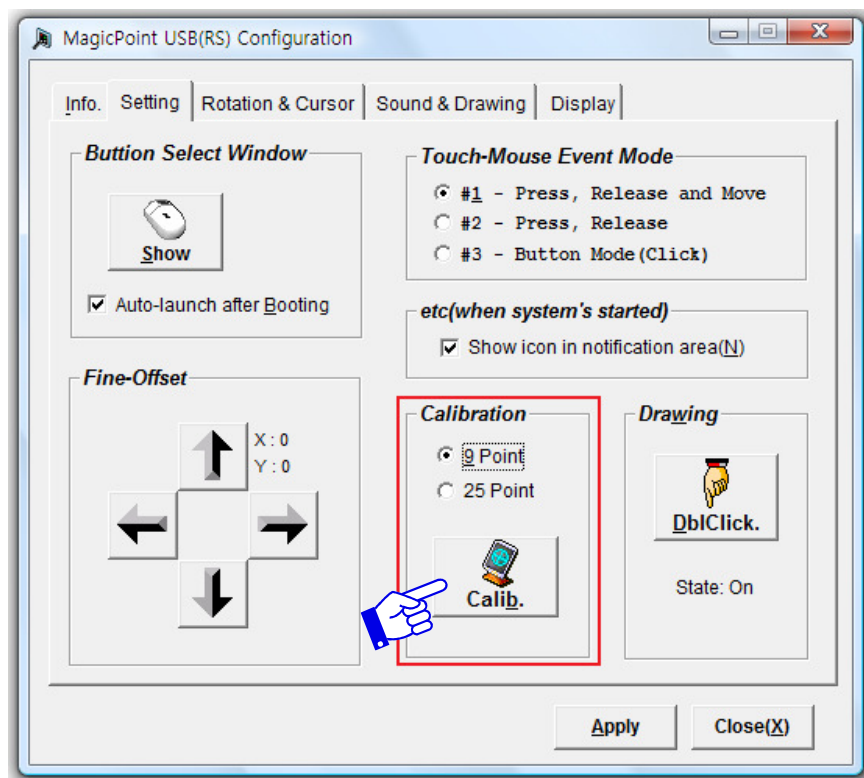


(2) Double click Test

- ❖ The effective Area of Double Click can be tested by clicking in the white rectangle of the Example box.

E. Calibration

- ❖ For improved accuracy of touch screen coordinates, setup a “Touch Calibration.” Select “9 Point” or “25 Point” under [Calibration] as shown below. Then click [Calib].





- ❖ Complete the calibration by pressing and releasing the Target Point with a finger or pen 9~25 times repeatedly.

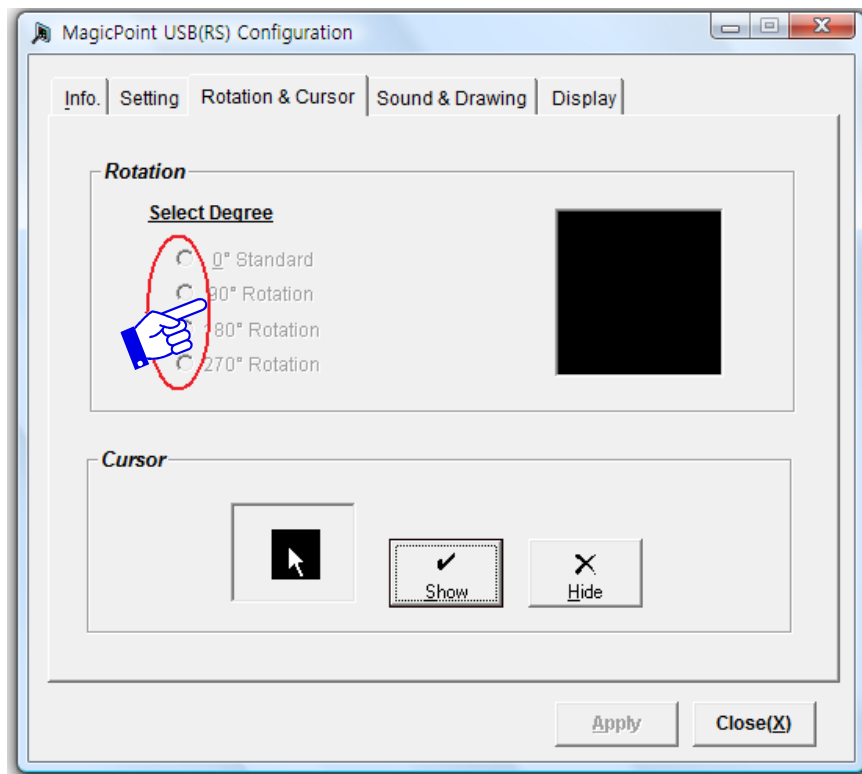


A “9 Point Calibration” is appropriate for general use but if greater accuracy is required, use “25 Point Calibration” setting.

4. Rotation & Cursor

A. Rotation setting

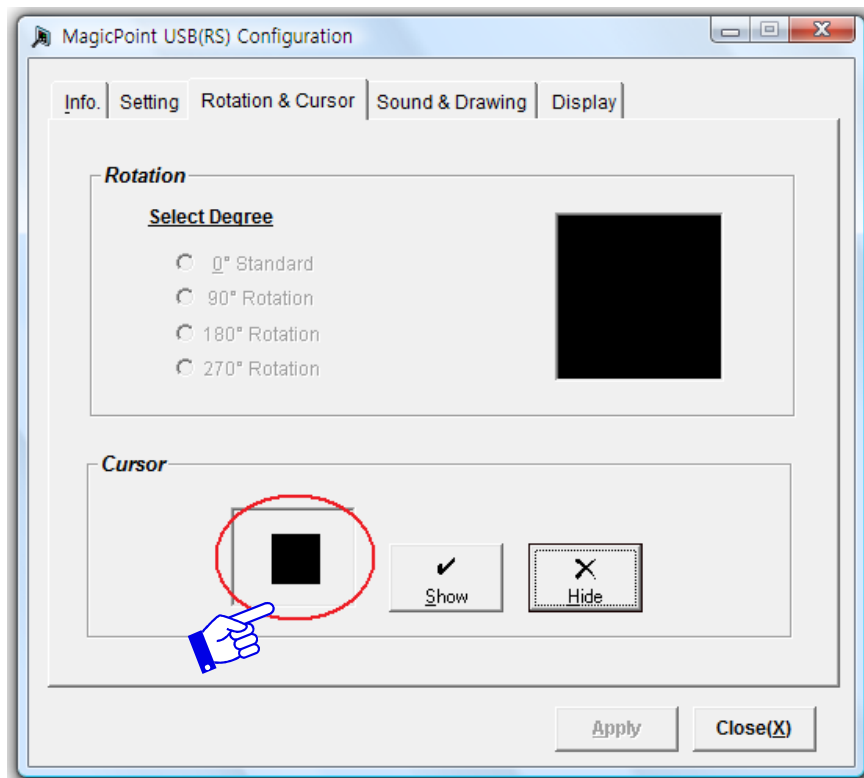
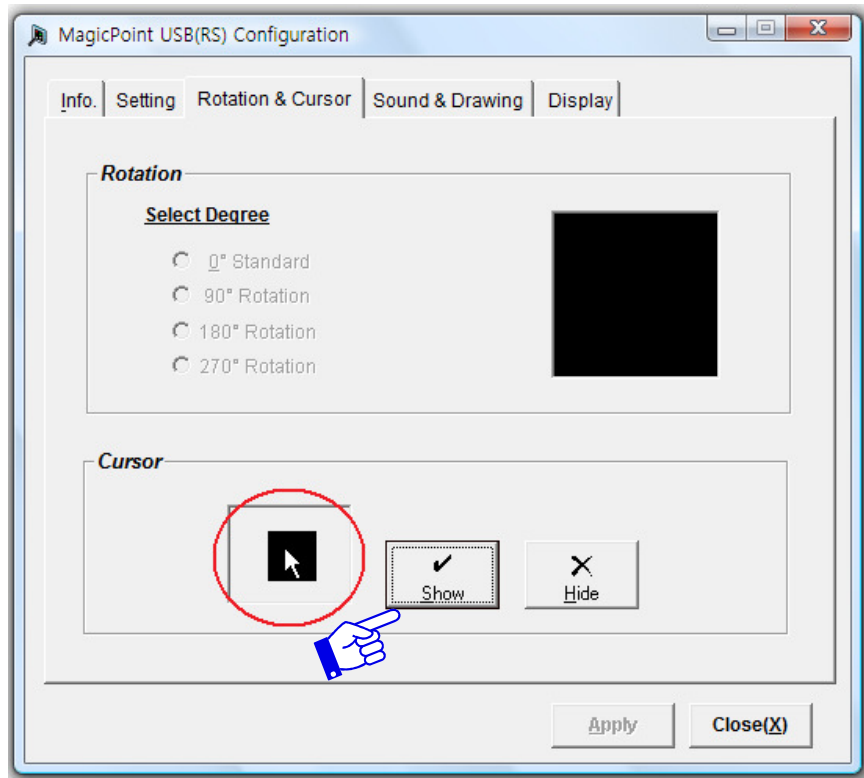
- ❖ To rotate touchmonitor select the preferred degree option under [Select Degree]. You can see the rotated shape of the touch screen in the preview pane.



- 📝 Make sure that you calibrate touchmonitor degree again after altering rotation setting.

B. Cursor show/ hide setting

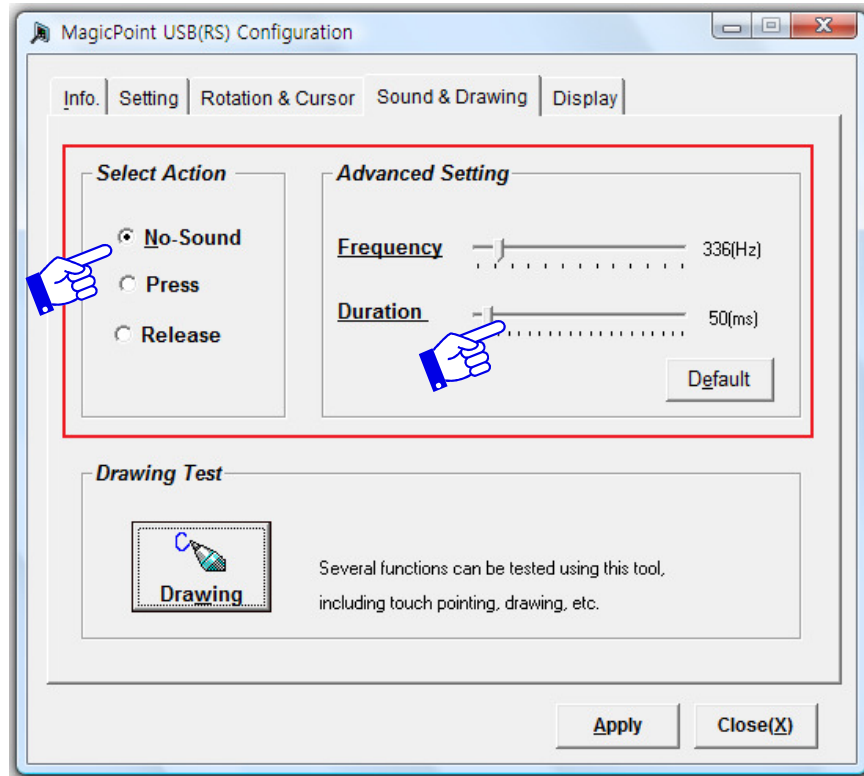
- ❖ You can show or hide the Cursor with the [Show] and [Hide] buttons. Click [Apply]



5. Sound & Drawing

A. Sound setting

- ❖ Sound effects for each touch action can be set using the Sound & Drawing Tab.



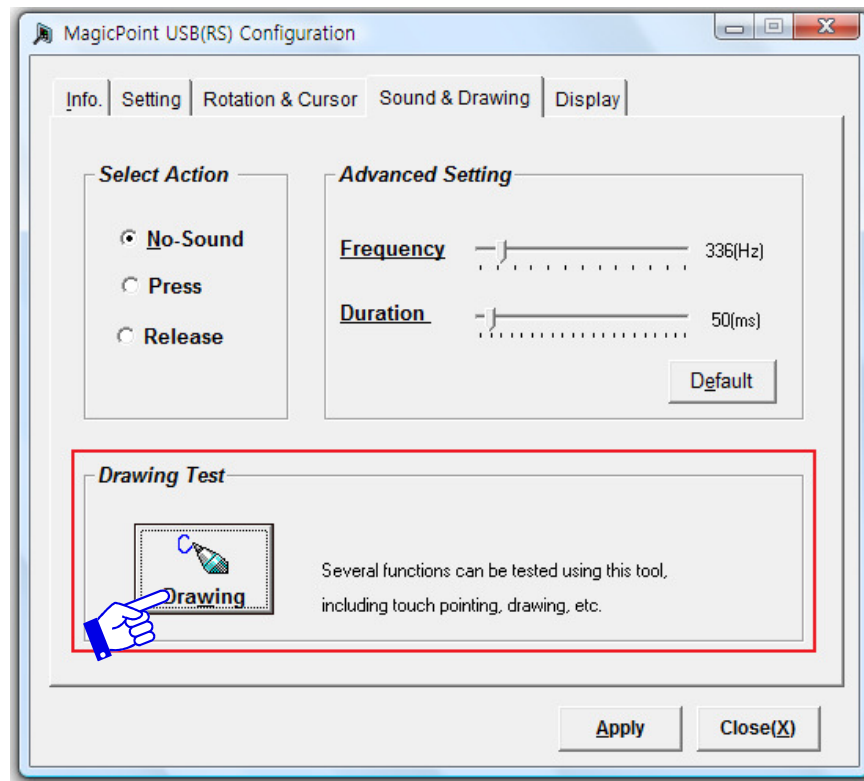
- ❖ Selecting sound action

No	No sound
Press	Sound effect only by pressing (on) Touch Screen
Release	Sound effect only by releasing (off) Touch Screen

- ❖ Selecting sound frequency option
- ❖ Selecting favorite frequency (Hz) and click [Apply] button.
- ❖ Selecting Sound duration option
- ❖ Selecting favorite duration (ms) and click [Apply] button.
- ❖ Default of frequency and duration are 356() and 50() each.

B. Drawing test

- ❖ Click [Drawing] in the Sound and Drawing tab for a drawing test.



FAQ of touchscreen

- ❖ Q1. When connecting the USB cable to the touch screen and to the USB port of the computer the message “cannot find driver File” appears?
 - The driver file already installed in your system may have been damaged. Install “Setup.exe” file again from the Set-up CD. If a dialog box “Maintenance Type” appears, select and execute [Repair] from [Modify] [Repair] [Remove]. (Please refer to Installation in Chapter 1.)
- ❖ Q2. Message of “unknown device” appears in the Device Manager dialog box.
 - Please install and execute “Setup.exe” file from the Set-up CD. (Please refer to Installation in Chapter 2.)
- ❖ Q3. How do I know if MagicPoint 2.x has been installed properly on the computer?
 - Please select Start >> Control Panel >> System >> Device Manager >> Mouse, and a confirmation message of “MagicPoint Serial (or USB) Touch Mouse (Resistive)” will appear.
- ❖ Q4. Touch Screen Monitor doesn't appear in Information dialog box.
 - Check Touch Screen Monitor power is on.
 - Check the connection between computer and Touchmonitor.
 - Follow Question 3, then restart the system.
 - If the above do not assist, the USB cable or touch screen monitor may be damaged. Please send model number to our certified agency noted on rear side of Touchmonitor.
- ❖ Q5. Double Click is not working.
 - Time and area of double click may be narrowly adjusted, so please adjust time and area of double click more widely. (Please refer to Configuration Setting >> Double Click Setting in Chapter 2)
- ❖ Q6. XY coordinate mis-alignment
 - In the case of manual Calibration, XY coordinate mis-alignment may happen. Recalibrate according to the instructions of [Calibration] in the [Setting] tap, Chapter 2.
 - Readjust pointer's position in the Fine Offset option. (Please refer to Fine Offset Setting in Chapter 2)
- ❖ Q7. Un-installation does not work.
 - The driver file already installed in your system may be damaged, so please install “Setup.exe” from the installation CD selecting [Repair] Type option and try to uninstall again.
 - (Please refer to Un-Installation in Chapter 1.)

- ❖ Q8. Should the system always be restarted after installation?
 - Though USB itself has Plug and Play (PnP) function to identify and run devices and driver, restarting the system is recommended to allow better operability. In the case of changing version of MagicPoint on your system, the system should be restarted.
- ❖ Q9. Should the system always be restarted after un-installation?
 - Yes, restarting the system is recommended.
- ❖ Q10. Service Error dialog box appears after finishing installation.
 - Please restart system and install again.
- ❖ Q11. Sound is not generated from laptop computer.
 - Speakers are required for laptop computer sound effects. Please connect speaker system to it if desired.

